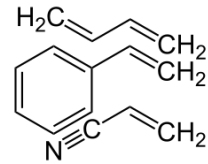


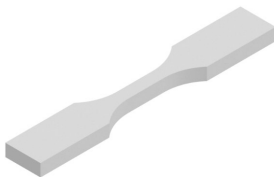
LCD/DLP Resin  

ABS-Like

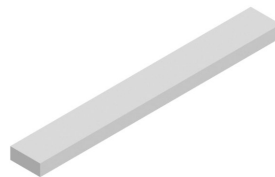


TECHNICAL DATA SHEET		
	Cure >45 min.	Standards
Color	Black	
Wavelength (nm)	395-405	
Viscosity (@25°C MPa·s)	185 (+/- 15)	
Density (g/cm ³)	1.10	
Shrinkage (%)	+/- 2	
Flexure strength (MPa)	77 (+/-5)	ISO 178
Flexure modulus (MPa)	2460 (+/- 150)	ISO 178
Tensile strength (MPa)	55 (+/- 5.5)	ASTDM D638
Tensile modulus (MPa)	2115 (+/-150)	ASTDM D638
Elongation at break (%)	32	ASTDM D638
Hardness (Shore D)	80	/
IZOD Impact Strength (kJ/m ²)	15.19	ISO 180
Heat Deflection Temp. (°C)	50	ASTDM D638

Tensile ASTDM D638 - Type V



Flexure ISO 178



SAFETY – WARNING

H302.Harmful if swallowed – H315.Causes skin irritation – H317.May cause an allergic skin reaction – H319.Causes serious eye irritation – H411.Toxic to aquatic life with long lasting effects – P261.Avoid breathing dust/fume/gas/mist/vapours/spray – P264. Wash arms, hands and face thoroughly after handling – P272.Contaminated work clothing should not be allowed out of the workplace – P273.Avoid release to the environment – P280.Wear protective gloves/protective clothing/eye protection/face protection – P305&P351&P338 IF IN EYE: Rinse cautiously with water for several minutes. Remove contact lenses if present and easy to do. Continue rinsing – P302&352 IF ON SKIN: Wash with soap and water – P310.Immediately call a POISON CENTER or doctor/physician P501.Dispose of contents and container in accordance with all local, regional, national and International regulations